

# DMX EP-TOUCH-1 CONTROLLER



## Product Introduction:

The EP-TOUCH-1 is a complete stand alone wall-mounted DMX controller is the perfect answer to interior lighting control expectations. Along with a state of the art design, the product comes with amazing features such as 1024 DMX channels, touch sensitive panel, clock/calendar, remote control, Ethernet facilities, and much much more....

## Performance Parameter

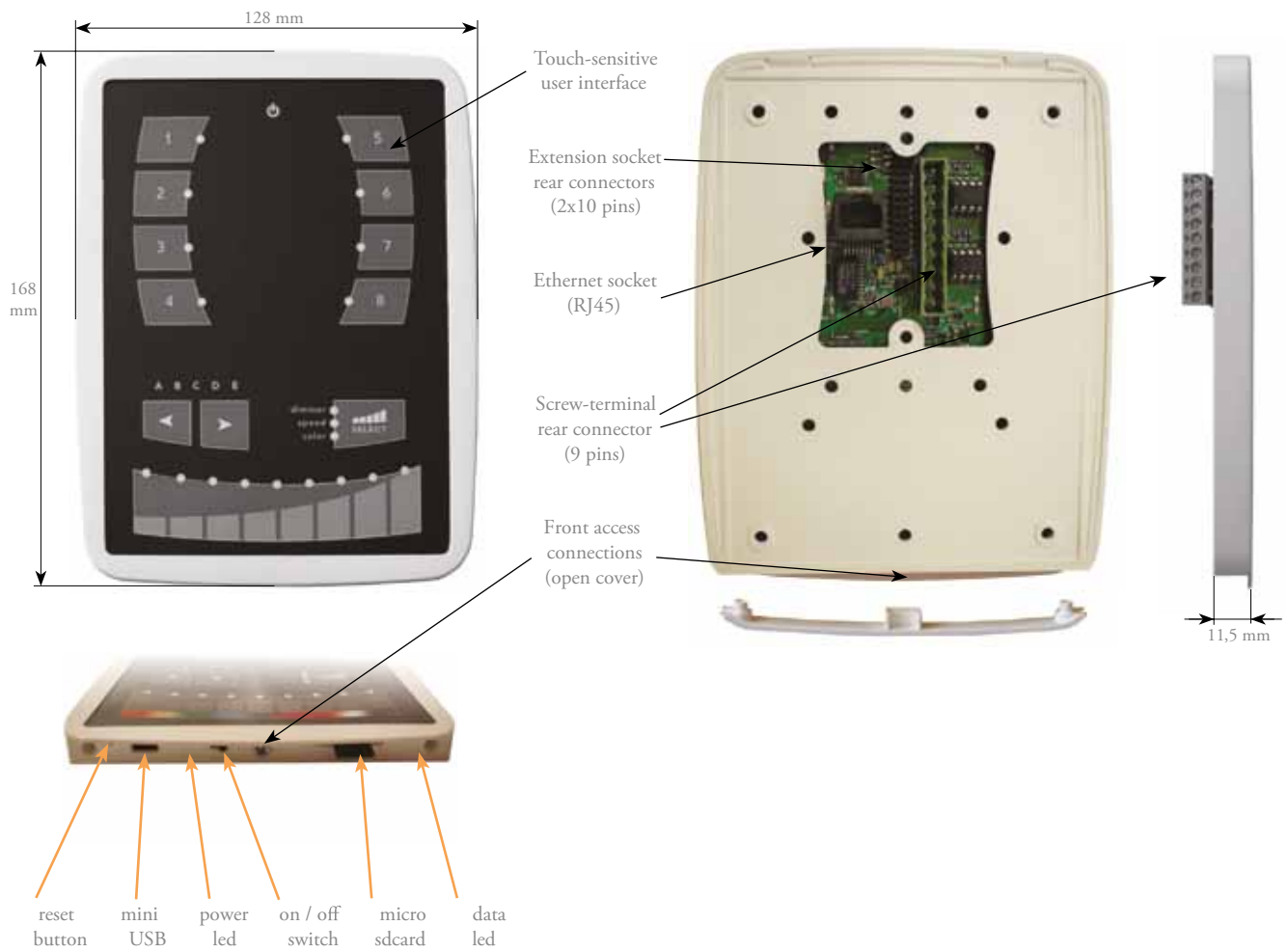
Package	Interface, sdcard, datasheet, cdrom, usb cable
Software	ESA + ESA PRO on PC/Windows, ESA2 on PC + MAC
Application	ARCOLIS + EP-TOUCH REMOTE on iPhone/iPad/Android
Available colors	Frame (black or white), use the Stick Design Configurator web site
Options	Dedicated remote control (*), Power supply (*)
Standards	EC, EMC, ROHS, ETL, UL (some are in process)
Image size	Standard 150x110mm picture, contact us for a sample profile
Temperature	-10°C to 50°C
Dimensions	168x128x11,5 mm Complete package 250x150x55 mm
Weight	0,2 kg 0.44 lbs Complete package 0,6 kg 1.32 lbs

## Specification

SPECIFICATIONS / CONNECTIONS		Built-in features	screw-terminal rear connector (9 pins)	extension socket rear connectors (2x10 pins)	front access connections (open cover)
Power Supply	9V DC 0.65A, supplied*				USB
DMX Output #1F	first universe, 512 channels DMX512 output		••		
DMX Output #2S	second universe, 512 channels DMX512 output (*)			•	
USB	USB 2.0 communication for PC/software				•
Ethernet	Advanced networking features	•			
Ports 1,2,3,4	Contact closure inputs, connect to ground for operating		••		
Ports 5,6,7,8	Contact closure inputs, connect to ground for operating			•	
User interface	14 buttons, 1 fader, 28 leds (Touch-sensitive keypad)*				power/data leds
SDCARD	Micro sd card for stand alone memory use (supplied)				•
RESET	Push button for reset operation				•
RS232	RS232 Serial communication for external synchronisation			•	
Output relay	Automatic Stand by 5V signal			•	
Clock	Real time clock and calendar, 10 minutes saving without power	•			
Infrared receiver	Easy learning triggering from any 36Khz remote control*				



## Dimensions



# DMX EP-TOUCH-1

## CONTROLLER Installation

1. Mount an electrical box inside the wall

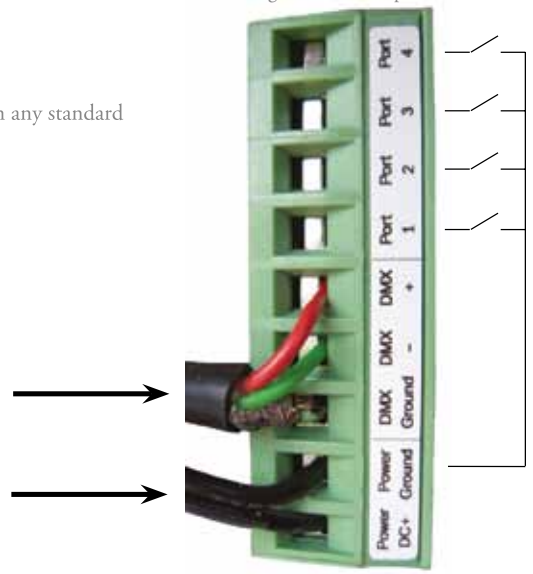
The EP-TOUCH-1 controller can be installed in any standard electrical backbox. If you use a double size box, you can insert the power supply inside.



2. Connect the wires

DMX: Connect the DMX cable to the lighting receivers (Leds, Dimmers, Fixtures..) (for XLR: 1=ground 2=dmx- 3=dmx+)

POWER: Connect a 9V DC 0.65A. Be sure to not invert the + and the ground.



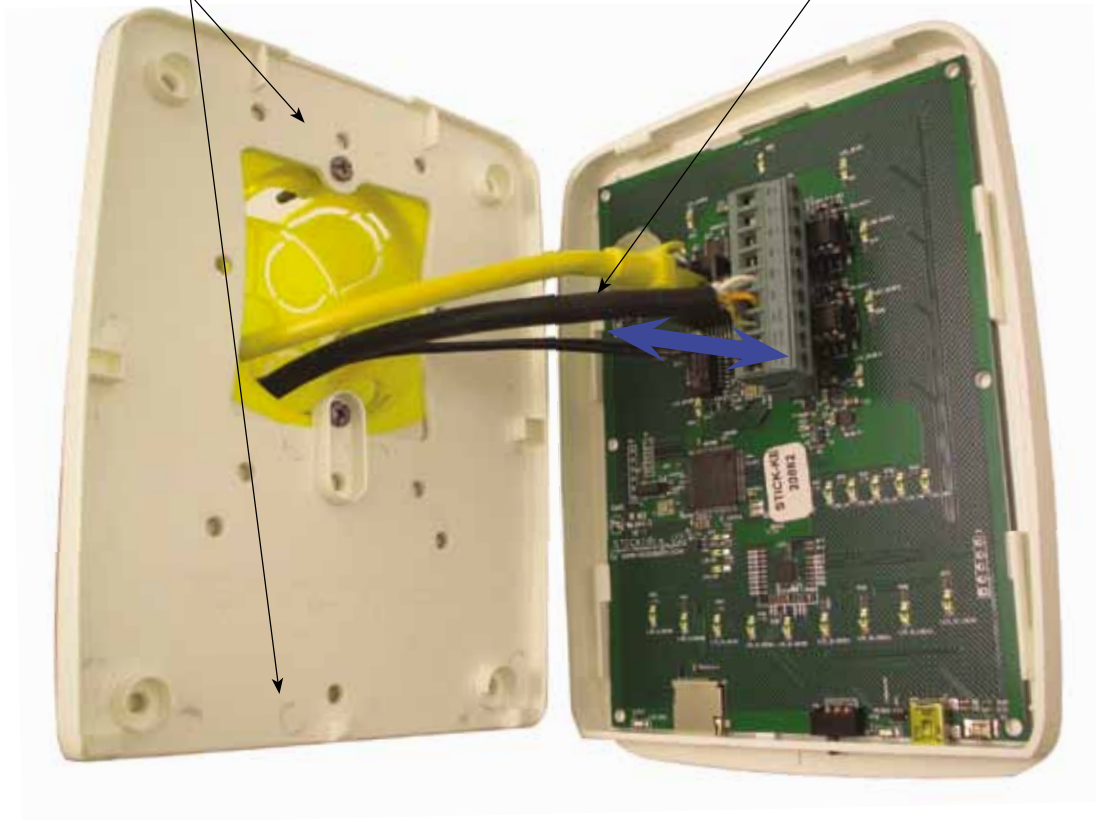
PORT 1,2,3,4 : If your application need to have some external contact closures, make the contacts between the ground and the ports

3. Mount the interface on the wall

First, mount the back side of the interface on the wall with 2 or more screws

Secondly, plug the 2 connectors (see blue arrow)

Then, close the interface, using one screw



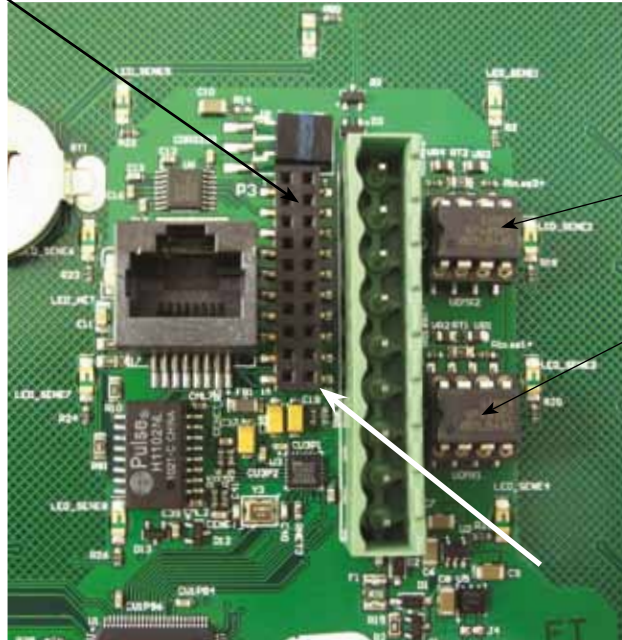




## 2x10 pins EXTENSION connector

P3		
RS232 TX	1	GND_DMX
RS232 RX	2	DMX1-
PORT7	3	DMX1+
PORT6	4	DMX2-
PORT5	5	DMX2+
PORT4	6	Relay
PORT3	7	3.3V
PORT2	8	IR_RX
PORT1	9	GND
PORT0	10	VIN

Compatible connectors:  
 WURTH ELEKTRONIK ref: 61301021121  
 MOLEX ref: 10-89-7202  
 TE Connectivity ref: 1-87227-0  
 FCI ref: 77313-101-20LF  
 HARWIN ref: M20-9981046  
 SAMTEC ref: TSW-110-xx-T-D  
 FARNELL ref: 1841232  
 RS ref: 763-6754 673-7534 251-8165  
 MOUSER ref: 538-10-89-7202  
 DIGIKEY ref: WM26820-ND



You can easily replace DMX CHIPS

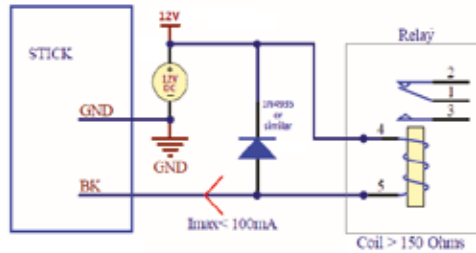
DMX universe #2

DMX universe #1

Ref:  
 SP485ECP-L  
 MAX485CPA+

PORTS 1 to 8 make contacts between G (GND) and P1..P8

BLACKOUT relay (energy save) using the 2 pins : BK and G (GND)



Example of relay : FINDER  
 Ref. 22.23.9.012.4000  
<http://www.findernet.com/fr/products/profiles.php?serie=22&lang=en>

## RS232 triggering

Make a cable using the 3 pins : TX, RX and G (GND)

Set the RS232 parameters to : 9600bds 8 bits, no Parity, 2 Stop bits

- To play a scene, send 3 bytes :           1       x 255                   (x = scene number)
- To stop a scene, send 3 bytes :           2       x 255                   (x = scene number)
- To pause a scene, send 3 bytes :         3       x 255                   (x = scene number)
- To release a pause, send 3 bytes :       4       x 255                   (x = scene number)
- To reset a scene, send 3 bytes :         5       x 255                   (x = scene number)

Note: the scene number (x) can be from 1 to 40. For instance, 11 means Page B Scene #3

## SOFTWARE

ARCOLIS software (iPhone/iPad)  
 ARCOLIS software (Android)

ESA, ESAPRO software (Windows)  
 ESA2 software (Windows, Mac)  
 ESA, ESAPRO manuals

EP-TOUCH REMOTE  
 Remote application for iPhone/iPad, Android, Windows

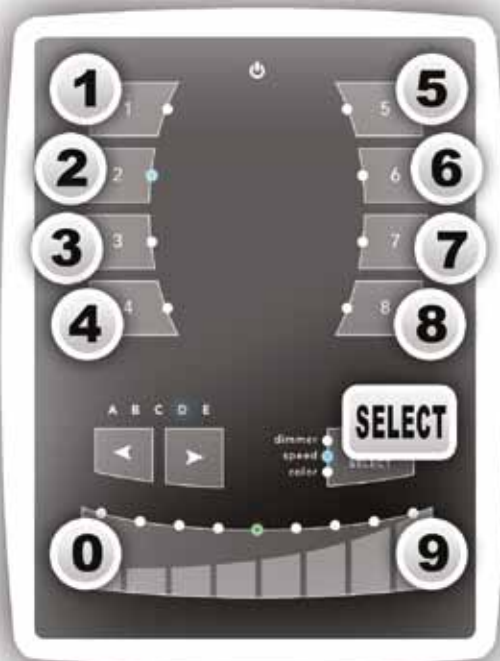
Driver, Firmware, Tools





# DMX EP-TOUCH-1 CONTROLLER

Some functions are available directly from the STICK keypad using the SELECT button.



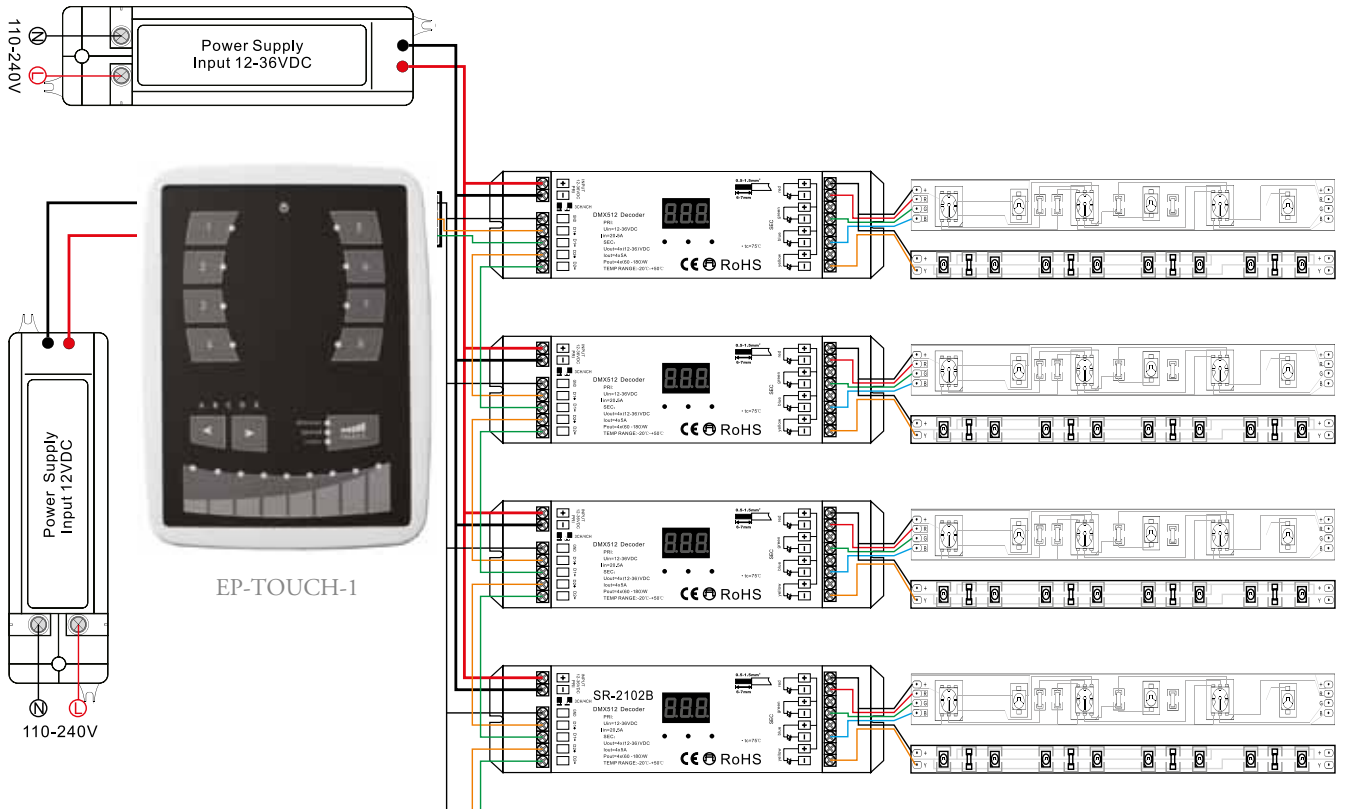
**WARNING**

= 3:30pm  
3:30pm = 15:30  
15:30 = **1530**

---

= 5 DEC 2008  
5 DEC 2008 = **051208**

	View time	Example : view 2:45pm = 14:45 = <b>1445</b> <b>1445</b> = 2:45pm (USA) or 14:45 (Europe)
	View date	Example : view 6 SEP. 2009 date = <b>060909</b> <b>060909</b> = September 6th 2009
	Set time	Example : set 3:30pm = 15:30 = <b>1530</b> = <b>1530</b>
	Set date	Example : set 5 DEC 2008 date = <b>051230</b> = <b>051208</b>
	Set Fade time	Example : set 01'32" fade time = 1 minute and 32 seconds = <b>0132</b> = <b>0132</b>
	Lock function	This function locks the keypad (disabled by default) Use the TOOLS program to enable it and set the 4-digit code
	Set IR	Example : assign an IR key to Scene #2 
	Firmware version	Example : view 1.02 firmware version = <b>0102</b> <b>0102</b> = firmware version 1.02



# NETWORK SYNCHRONIZATION

